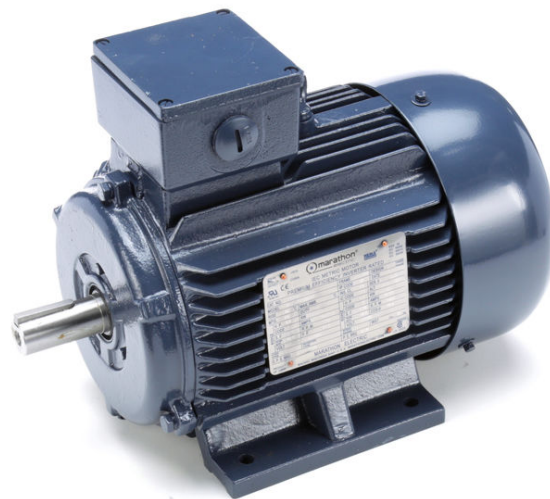


PRODUCT INFORMATION PACKET

Model No: 112MTFC6536

Catalog No: R325A

5.50 HP General Purpose, 3 phase, 1800 RPM, 230/460 V, 112M Frame, TEFC
Cast Iron TEFC Motors





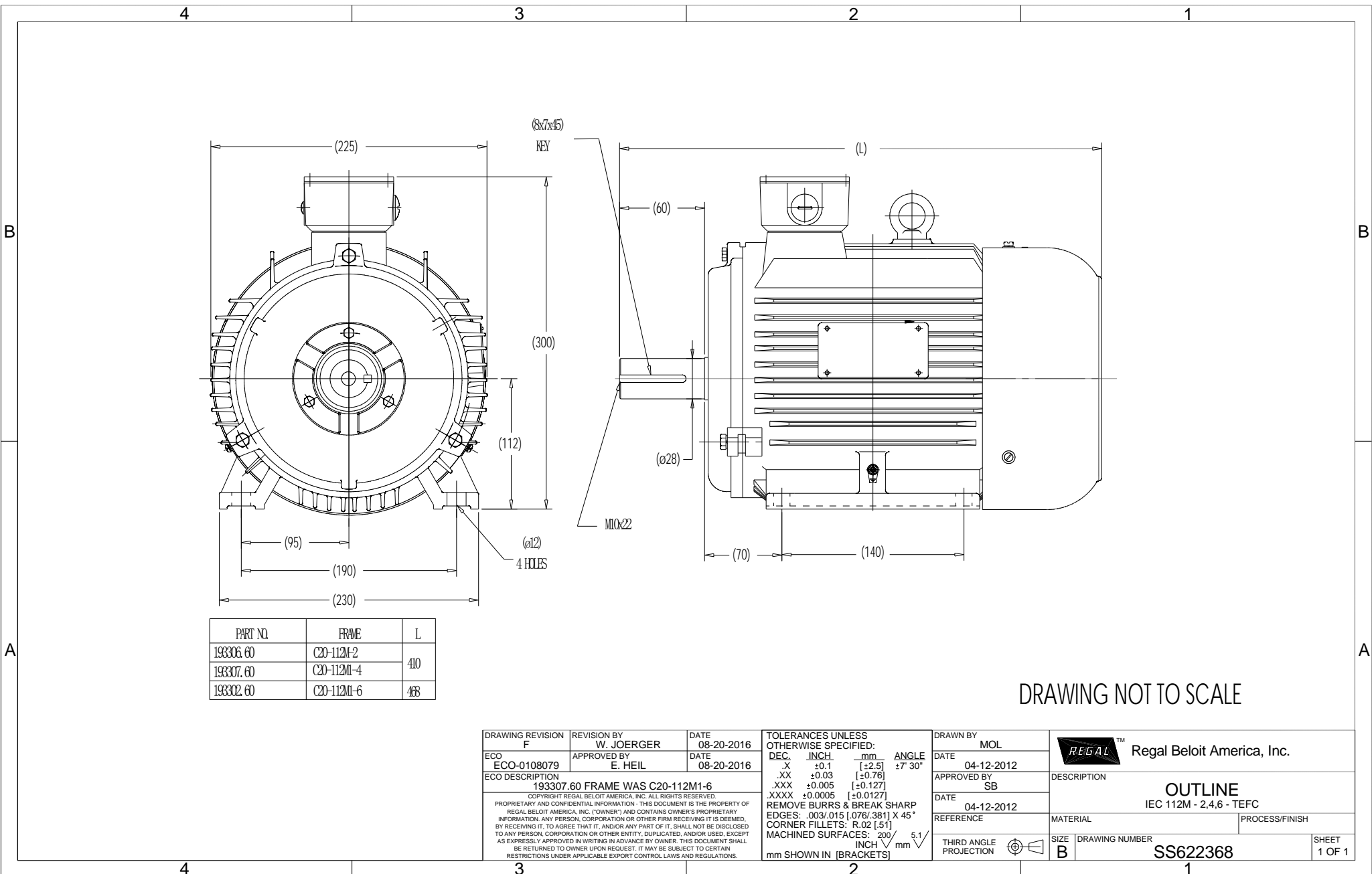
Nameplate Specifications

| | | | |
|------------------------|-------------------|----------------------------|------------------------------------|
| Output HP | 5.50 Hp | Output KW | 4.1 kW |
| Frequency | 60 Hz | Voltage | 230/460 V |
| Current | 14.0/7.0 A | Speed | 1755 rpm |
| Service Factor | 1.15 | Phase | 3 |
| Efficiency | 89.5 % | Power Factor | 81 |
| Duty | Continuous | Insulation Class | F |
| Design Code | B | KVA Code | J |
| Frame | 112M | Enclosure | Totally Enclosed Fan Cooled |
| Thermal Protection | No | Ambient Temperature | 40 °C |
| Drive End Bearing Size | 6206 | Opp Drive End Bearing Size | 6205 |
| UL | Recognized | CSA | Y |
| CE | Y | IP Code | 55 |

Technical Specifications

| | | | |
|-----------------------|-------------------------------------|-------------------|-------------------------|
| Electrical Type | Squirrel Cage Inverter Rated | Starting Method | Line Or Inverter |
| Poles | 4 | Rotation | Reversible |
| Resistance Main | .754 Ohms | Mounting | Rigid Base |
| Motor Orientation | Horizontal | Drive End Bearing | Ball |
| Opp Drive End Bearing | Ball | Frame Material | Cast Iron |
| Shaft Type | IEC | Overall Length | 18.42 in |
| Shaft Diameter | 1.111 in | Shaft Extension | 2.36 in |
| Assembly/Box Mounting | F3 | | |
| Connection Drawing | 005010.01 | Outline Drawing | SS622368-193307 |

This is an uncontrolled document once printed or downloaded and is subject to change without notice. Date Created:19/10/2020



| PART NO. | FRAME | L |
|-----------|------------|-----|
| 193306.60 | C20-112M-2 | 410 |
| 193307.60 | C20-112M-4 | 410 |
| 193302.60 | C20-112M-6 | 468 |

DRAWING NOT TO SCALE

| | | | | | | | |
|---|--|---------------------------|--------------------|--|--------------------|----------------------------|--|
| DRAWING REVISION F | | REVISION BY W. JOERGER | DATE 08-20-2016 | TOLERANCES UNLESS OTHERWISE SPECIFIED: DEC. INCH mm ANGLE .X ±0.1 [+2.5] ±7-30° .XX ±0.03 [+0.76] .XXX ±0.005 [+0.127] .XXXX ±0.0005 [+0.0127] REMOVE BURRS & BREAK SHARP EDGES: .003/.015 [.076/.381] X 45° CORNER FILLETS: R.02 [.51] MACHINED SURFACES: 200 5.1 INCH mm mm SHOWN IN [BRACKETS] | DRAWN BY MOL | Regal Beloit America, Inc. | |
| ECO ECO-0108079 | | APPROVED BY E. HEIL | DATE 08-20-2016 | | DATE 04-12-2012 | | DESCRIPTION OUTLINE IEC 112M - 2,4,6 - TEFC |
| ECO DESCRIPTION 193307.60 FRAME WAS C20-112M1-6 COPYRIGHT REGAL BELOIT AMERICA, INC. ALL RIGHTS RESERVED. PROPRIETARY AND CONFIDENTIAL INFORMATION - THIS DOCUMENT IS THE PROPERTY OF REGAL BELOIT AMERICA, INC. (OWNER) AND CONTAINS OWNER'S PROPRIETARY INFORMATION. ANY PERSON, CORPORATION OR OTHER FIRM RECEIVING IT IS DEEMED, BY RECEIVING IT, TO AGREE THAT IT, AND/OR ANY PART OF IT, SHALL NOT BE DISCLOSED TO ANY PERSON, CORPORATION OR OTHER ENTITY, DUPLICATED, AND/OR USED, EXCEPT AS EXPRESSLY APPROVED IN WRITING IN ADVANCE BY OWNER. THIS DOCUMENT SHALL BE RETURNED TO OWNER UPON REQUEST. IT MAY BE SUBJECT TO CERTAIN RESTRICTIONS UNDER APPLICABLE EXPORT CONTROL LAWS AND REGULATIONS. | | | | DATE 04-12-2012 | MATERIAL | PROCESS/FINISH | |
| | | | | REFERENCE | SIZE B | DRAWING NUMBER SS622368 | SHEET 1 OF 1 |

005010-01

VIEW FROM OUTSIDE OF MOTOR AT SWITCH END.



| VOLTAGE | L1 | L2 | L3 | JOIN & INSULATE |
|---------|-------|-------|-------|-------------------------------|
| HIGH | T1 | T2 | T3 | (T4,T7) (T5,T8) (T6,T9) |
| LOW | T1,T7 | T2,T8 | T3,T9 | T4,T5,T6 |

| | | | | | | | | | | | |
|--|-----------------------|--|--|--------------------------------|----------|--|----------|--------------------|-----------------------|-------------|------|
| | | | | TOLERANCES UNLESS SPECIFIED | | REGAL ™ Regal Beloit America, Inc. | | DRAWN RDW 04/12/02 | | | |
| | | | | DEC. | INCHES | | | CHK | | | |
| | | | | .X | ±.1 | | | APPD | | | |
| | | | | .XX | ±.01 | | | SCALE 1=1 | | | |
| | | | | .XXX | ±.005 | TITLE | | REF FIG.2-51 | | | |
| A | UPDATED TO REGAL LOGO | | | SAJ | 06/26/15 | AJY | .XXXX | ±.0005 | MAT'L. DECAL - 004014 | FMF | |
| NO. | REVISION | | | BY & DATE | CHK | ANG | ±1/2" | FINISH | PREV | | |
| THIS DRAWING IN DESIGN AND DETAIL IS OUR PROPERTY AND MUST NOT BE USED EXCEPT IN CONNECTION WITH OUR WORK ALL RIGHTS OF DESIGN AND INVENTION ARE RESERVED THIS IS AN ELECTRONICALLY GENERATED DOCUMENT - DO NOT SCALE THIS PRINT | | | | RFP | 04/12/02 | CAD FILE | 00501001 | | SIZE | DRAWING NO. | REV. |
| | | | | DIST | BRF-NLV | | | A | 005010-01 | A | |

CERTIFICATION DATA SHEET

Model#: 112MTFC6536 A WINDING#: T08704015 NONE 3
 CONN. DIAGRAM: 005010.01 ASSEMBLY: F3
 OUTLINE: SS622368

TYPICAL MOTOR PERFORMANCE DATA

| HP | KW | SYNC. RPM | F.L. RPM | FRAME | ENCLOSURE | KVA CODE | DESIGN |
|---------|----------|-----------|-----------|-------|-----------|----------|--------|
| 5 1/2&4 | 4.1&2.98 | 1800 | 1755&1460 | 112M | TEFC | J | B |

| PH | Hz | VOLTS | FL AMPS | START TYPE | DUTY | INSL | S.F | AMB°C | ELEVATION |
|----|-------|-----------------|---------------|------------------|------------|------|-----------|-------|-----------|
| 3 | 60/50 | 230/460#200/400 | 14/7&12.6/6.3 | LINE OR INVERTER | CONTINUOUS | F2 | 1.15/1.15 | 40 | 3300 |

| FULL LOAD EFF: 89.5&88.5 | 3/4 LOAD EFF: 90.2 | 1/2 LOAD EFF: 89.5 | GTD. EFF | ELEC. TYPE | NO LOAD AMPS |
|--------------------------|--------------------|--------------------|----------|-------------------|--------------|
| FULL LOAD PF: 81&77 | 3/4 LOAD PF: 76 | 1/2 LOAD PF: 65 | 87.5 | SQ CAGE INV RATED | 6.2 / 3.1 |

| F.L. TORQUE | LOCKED ROTOR AMPS | L.R. TORQUE | B.D. TORQUE | F.L. RISE°C |
|-------------|-------------------|----------------|--------------|-------------|
| 16.5 LB-FT | 102 / 51 | 34.5 LB-FT 210 | 51 LB-FT 310 | 55 |

| SOUND PRESSURE @ 3 FT. | SOUND POWER | ROTOR WK^2 | MAX. WK^2 | SAFE STALL TIME | STARTS /HOUR | APPROX. MOTOR WGT |
|------------------------|-------------|------------|-----------|-----------------|--------------|-------------------|
| 65 dBA | 75 dBA | - LB-FT^2 | - LB-FT^2 | 20 SEC. | 2 | - LBS. |

***** SUPPLEMENTAL INFORMATION *****

| DE BRACKET TYPE | ODE BRACKET TYPE | MOUNT TYPE | ORIENTATION | SEVERE DUTY | HAZARDOUS LOCATION | DRIP COVER | SCREENS | PAINT |
|-----------------|------------------|------------|-------------|-------------|--------------------|------------|---------|---------------|
| STANDARD | STANDARD | RIGID | HORIZONTAL | TRUE | NONE | FALSE | NONE | BLUE (ENAMEL) |

| BEARINGS | | GREASE | SHAFT TYPE | SPECIAL DE | SPECIAL ODE | SHAFT MATERIAL | FRAME MATERIAL |
|----------|------|------------|--------------|------------|-------------|-------------------------|----------------|
| DE | OPE | POLYREX EM | STANDARD IEC | NONE | NONE | 1045 HOT ROLLED (C-204) | CAST IRON |
| BALL | BALL | | | | | | |
| 6206 | 6205 | | | | | | |

| THERMO-PROTECTORS | | | | THERMISTORS | CONTROL | SPACE /n HEATERS |
|-------------------|------------|----------|----------|-------------|---------|------------------|
| THERMOSTATS | PROTECTORS | WDG RTDs | BRG RTDs | NONE | FALSE | NONE VOLTS |
| NONE | NOT | NONE | NONE | | | |

If Inverter equals NONE, contact factory for further information

| |
|---------------------------------------|
| INVERTER TORQUE: CONSTANT 20:1 |
| INV. HP SPEED RANGE: 1.5 X BASE SPEED |
| ENCODER: NONE |
| NONE NONE |
| NONE NONE PPR |
| BRAKE: NONE NONE |
| NONE P/N NONE |
| NONE NONE |
| NONE FT-LB NONE V NONE Hz |

*
N
O
T
E
S
*

DATE: 06/22/2017 04:31:06 AM
 FORM 3531 REV.3 02/07/99
 ** Subject to change without notice.

Data Sheet

112MTFC6536



Submital Data @ 460 V

Date: 1/3/2019
 Customer:
 Attention:
 Submitted by: FAREEDA DUDEKULA

Motor Load Data

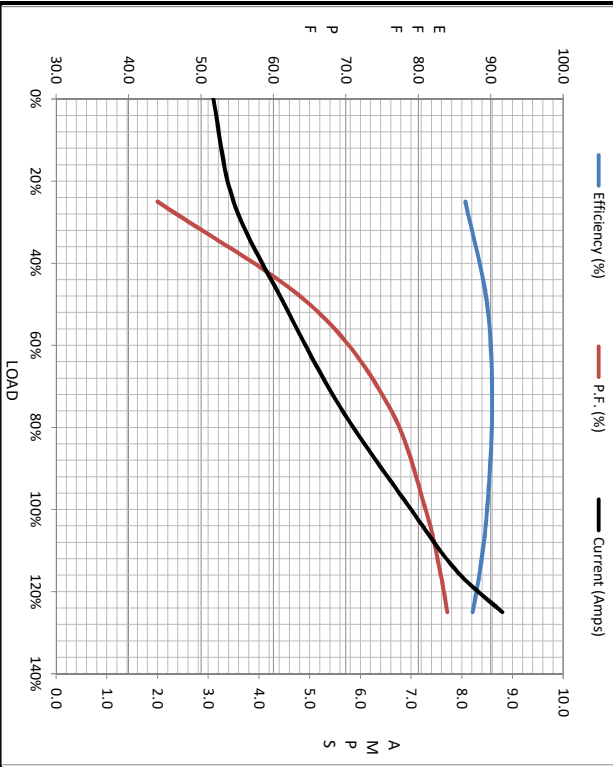
| Load | 0% | 25% | 50% | 75% | 100% | 115% | 125% | LR |
|----------------|------|------|------|------|------|-------|------|------|
| Current (Amps) | 3.1 | 3.5 | 4.5 | 5.6 | 7.0 | 7.9 | 8.8 | 51.0 |
| Torque (ft-lb) | 0.00 | 4.0 | 8.2 | 12.3 | 16.5 | 19.2 | 20.8 | 34.5 |
| RPM | 1800 | 1790 | 1780 | 1765 | 1755 | 1,745 | 1738 | 0 |
| Efficiency (%) | | 86.5 | 89.5 | 90.2 | 89.5 | 88.5 | 87.5 | 83.0 |
| P.F. (%) | 5.5 | 44.0 | 65.0 | 76.0 | 81.0 | 83.0 | 84.0 | 43.0 |

Motor Speed Data

| | LR | Pull-Up | BD | Rated | Idle |
|----------------|------|---------|------|-------|------|
| Speed (RPM) | 0 | 900 | 1550 | 1755 | 1800 |
| Current (Amps) | 51.0 | 48.0 | 30.5 | 7.0 | 3.1 |
| Torque (ft-lb) | 34.5 | 30.0 | 51.0 | 16.5 | 0.00 |

Information Block

| | | | | | |
|-----------------------------|--------------------------|--------|--------|--------|--------|
| HP | 5.5 | | | | |
| Sync. RPM | 1800 | | | | |
| Frame | 112 | | | | |
| Enclosure | TEFC | | | | |
| Construction | TFS | | | | |
| Voltage | 230/460#200/400 V | | | | |
| Frequency | 60 Hz | | | | |
| Design | B | | | | |
| LR Code letter | J | | | | |
| Service Factor | 1.15 | | | | |
| Temp Rise @ FL | 55 °C | | | | |
| Duty | CONT | | | | |
| Ambient | 40 °C | | | | |
| Elevation | 3300 feet | | | | |
| Rotor/Shaft wk ² | 0.00 Lb-Ft ² | | | | |
| Ret Wdg | T08704015 NONE | | | | |
| Sound Pressure @ 1M | 65 dBA | | | | |
| VFD Rating | CONSTANT 20:1 | | | | |
| Outline Dwg | SS622368 | | | | |
| Conn. Diag | 005010.01 | | | | |
| Additional Specifications: | | | | | |
| 0 | | | | | |
| 0 | | | | | |
| | EQUIV CKT (OHMS / PHASE) | | | | |
| | R1 | R2 | X1 | X2 | Xm |
| | 0.0000 | 0.0000 | 0.0000 | 0.0000 | 0.0000 |



Speed - Torque Curve

